

Validation in Tertiary Vocational Education and Higher Education in Norway. Results from recent surveys.

Conference on Validation, Oslo 6.3.2012

Prior Learning (Realkompetanse) in Norway

- All formal, non-formal and informal competence
- Systems for validation towards the education system regulated by law
 - since 2000 in Upper Secondary Education
 - Since 2001 in Higher Education
 - Since 2003 in Tertiary Vocational Education

Shared principles for validation

- Voluntary
- Beneficial
- Documentary proof owned by individual
- Easy to access
- Transparent

Formal Education in Norway

Upper secondary education

Academic study programs, 3 years	Vocational training, 4 years
---	------------------------------------

**Primary
and lower
secondary
school**

10 years

**Tertiary
vocational
education**
½ - 2 years

Higher education
University Colleges
and Universities

Bachelor
Master
PhD

Validation in Education sector

Upper secondary education

National curricula

Academic study programs, 3 years	Vocational training, 4 years
---	------------------------------------

Primary and lower secondary school

National
curricula

**Tertiary
vocational
education**
Local curricula

Higher education
University Colleges
and Universities

Local curricula

National statistics

Tertiary Vocational Education:

- Started collecting statistics in 2011: App. 7 % PL students (1107 out of 14812)

Universities and University Colleges:

- 2010: 221 123 students. 6146 PL applicants, 2957 qualified applicants

National VPL Working Groups

- Working group for Validation in Tertiary Vocational Education
- Working group for Validation in Universities and University Colleges

Both groups are lead by Vox

Tertiary Vocational Education

Since 2003:

General admittance based on Vocational Education or Prior Learning

Subject of national survey:

- How many were validated last year?
- How is the validation performed?

Respondents



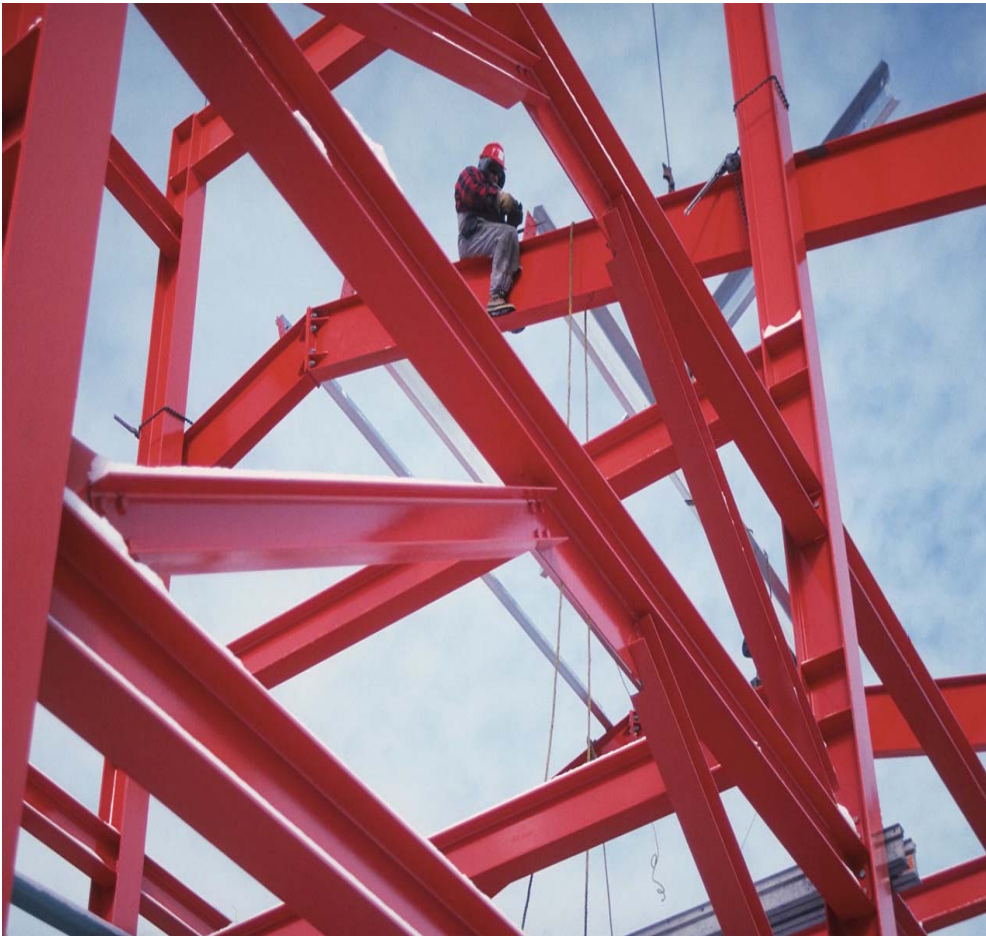
- 54 % response: 61 respondents out of 112 recipients
- 18 out of 19 counties, 44 private institutions and 17 public institutions

Validation



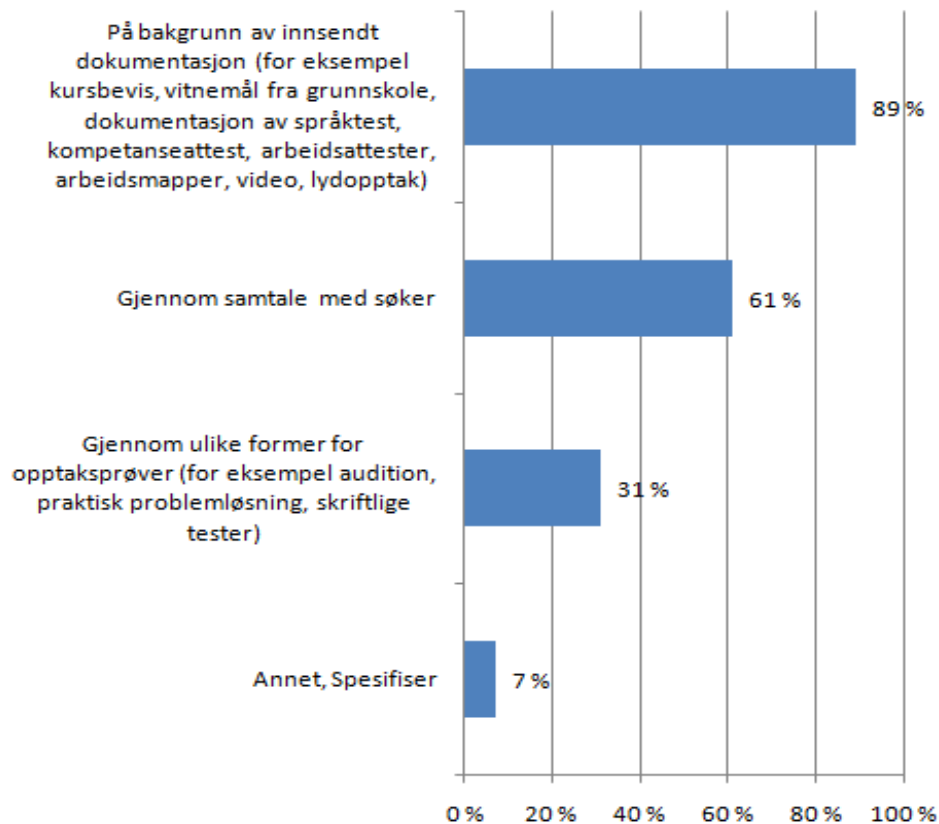
- 10 % PL applicants: App. 700 PL applicants out of totally 7319 applicants
- 57 % of the institutions have performed validation
43 % have not
- Variation: one institution 100 % PL students, one 2.6 % PL students

Criteria for validation



- Professional knowledge and work experience most important
- Age, > 19 years
- Norwegian and English language

A combination of methods



- Written documentation, 89 %
- Dialogue, 61 %
- Testing, 31 %
- Other, 7%

Nearly everybody qualified




- 657 out of 700 PL applicants (94 %) were admitted
- 556 started their studies

Admission and exemption in Universities and University Colleges

Since 2001:

- Admittance for applicants who are 25 years or older without a general college and university admissions certification
- Exemption from parts of a study program
- The procedures are decided locally

National survey:

- How many students are granted exemptions?
 - How are exemptions performed?
- 

Previous studies of exemption



- Exemption is seldom used
- Documentation difficult
- Low degree of information
- Lack of networking
- Lacking routines
- Financial drawbacks

Result of national survey



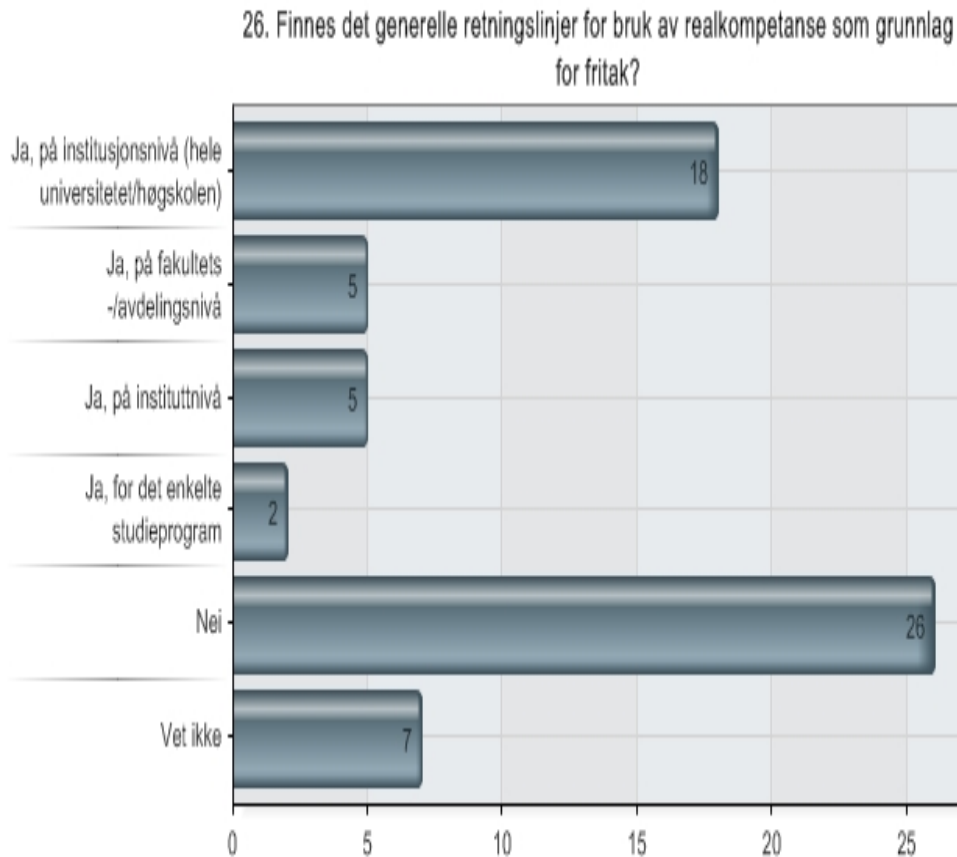
- 79 % response, 57 of 72
- 12 respondents granted exemptions in 2010/2011
- App. 200 applications, 198 approved
- Bachelor and master

Exemptions credited in study points



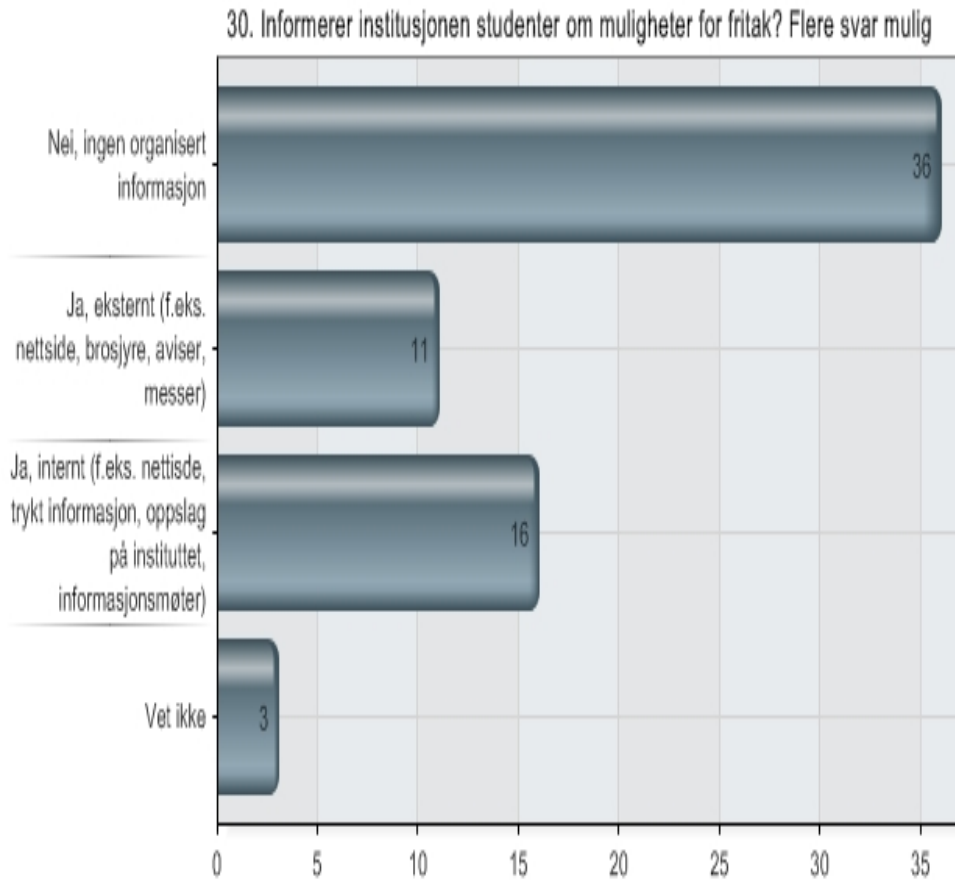
- All 12 give credit for the exemption by granting study points

Guidelines for exemption



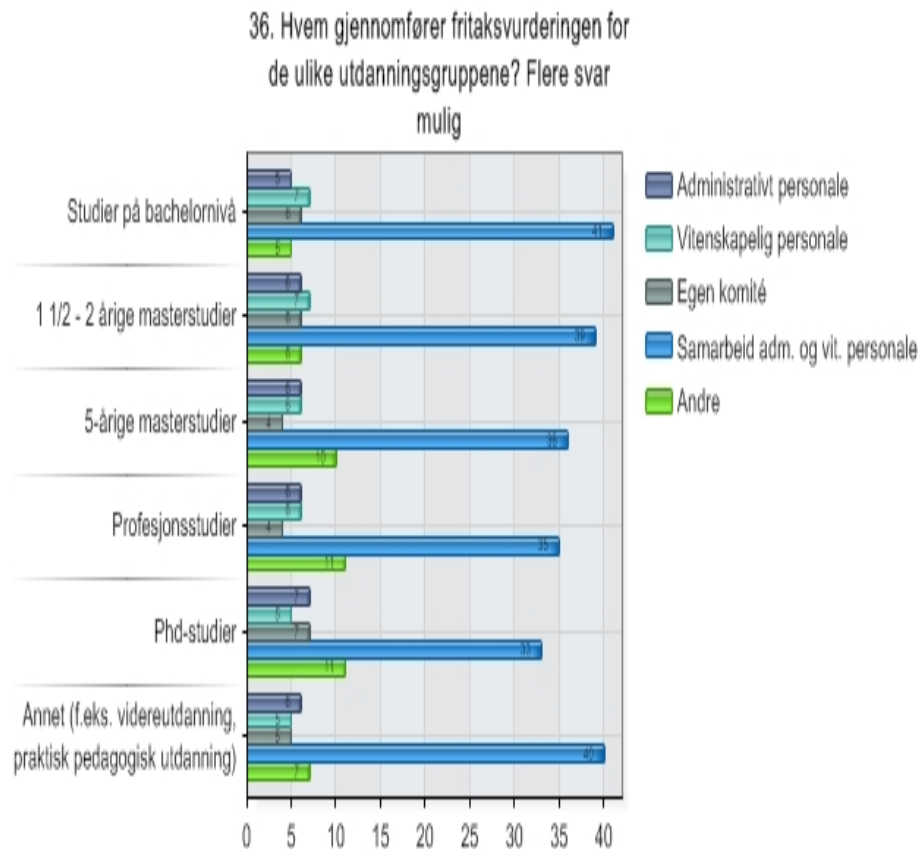
- 26 out of 57 have no guidelines for exemption

Information



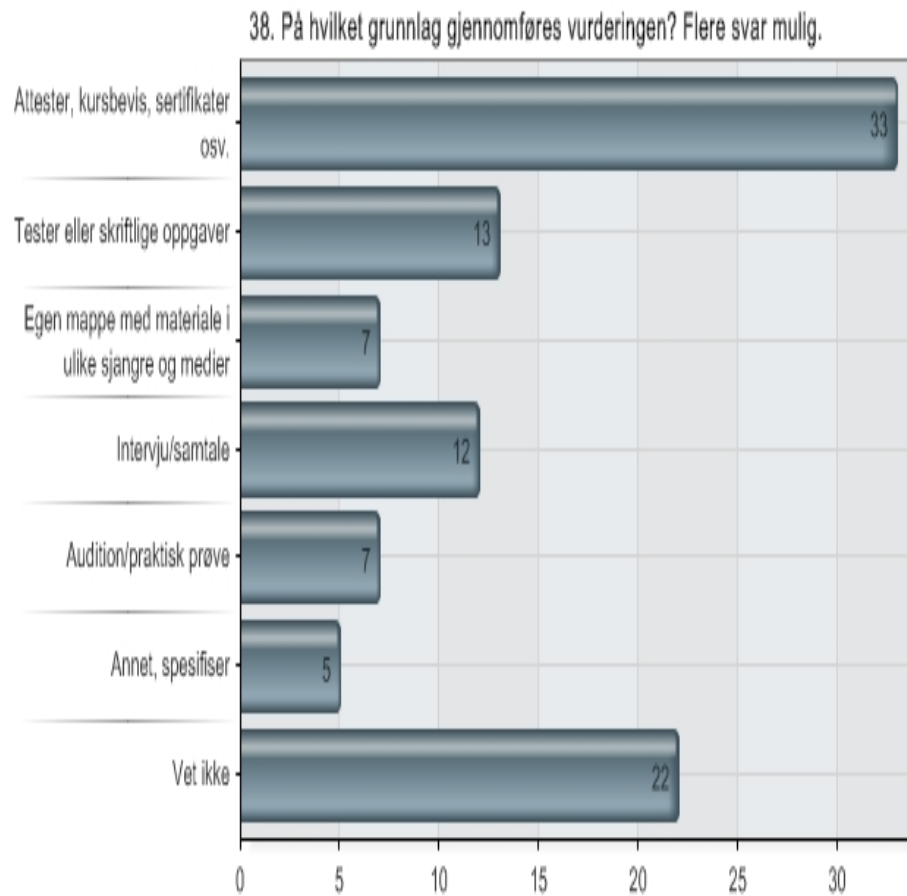
- 36 report no information strategy

Who validates?



- Cooperation between administrative and professional staff

Basis for validation



- Documents
- Tests
- Portfolio
- Dialogue
- Audition
- Other
- Don't know

Challenges

Structure

- Lack of methods and tools
- Lack of guidelines and criteria
- Lack of confidence in practice versus other institutions
- Financial drawbacks

Process and content

- Difficult to validate toward learning outcomes
- Crucial with sufficient documentation

Attitudes

- Scepticism

What is prior learning?

- Film showing an employees prior learning, try the link:
- http://www.vox.no/templates/CommonPage.aspx?id=2616&e_pslanguage=NO
- www.vox.no / English / validation / video

Thank you!

- Camilla.alfsen@vox.no
- www.vox.no